



Back-Off Mode vs. Back-Off Delay Mode

Two operating modes for two different levels of repeatability

Operating Modes Enhance SmartDispenser® Performance and Ease of Use.

Back-off Ratio Mode

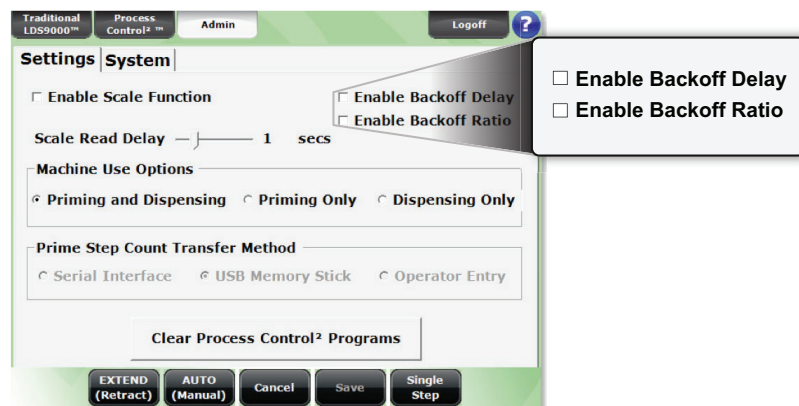
The relationship between dispense volume and back-off remains constant when dispense volume is changed. The result: changing the dispense volume automatically adjusts back-off accordingly.

How it Works: When you activate Back-off Ratio Mode the firmware determines the ratio, or percentage, between forward steps (dispense volume) and reverse steps (back-off). When forward steps in your fluid dispense program are changed, the reverse steps will automatically adjust to the forward steps keeping the initial percentage ratio constant.

How to Activate: Set your program, activate back-off ratio, save your program and dispense.

Traditional LDS9000® plus Back-off Ratio Mode.

Use Traditional LDS9000® plus Back-off Ratio Mode when multiple dispense volumes are used for the same fluid and same size syringe.



SmartDispenser®

Back-Off Mode vs. Back-Off Delay Mode

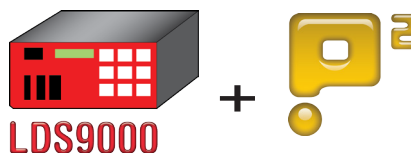
Back-off Delay Mode

Back-off Delay Mode is designed for RTV silicone. RTV silicone entraps large amounts of air pockets making the fluid very compressible. Centrifuging or degassing the silicone will not improve this condition. The result of the entrapped air is fluid compressibility requiring a drive system stroke that exceeds the SmartDispensers capability. The problem appears as excessive post dispense fluid ooze.

By activating Back-off Delay Mode the additional time between forward and reverse motion drastically reduces the Linear Drive stroke eliminating post dispense fluid ooze.

How it Works: The firmware applies a delay (in seconds) between forward motion (fluid volume) and reverse motion (back off). The delay allows syringe pressure to drop enough reducing stroke. The reduced stroke allows for a full back-off cycle to complete, thus eliminating post dispense ooze.

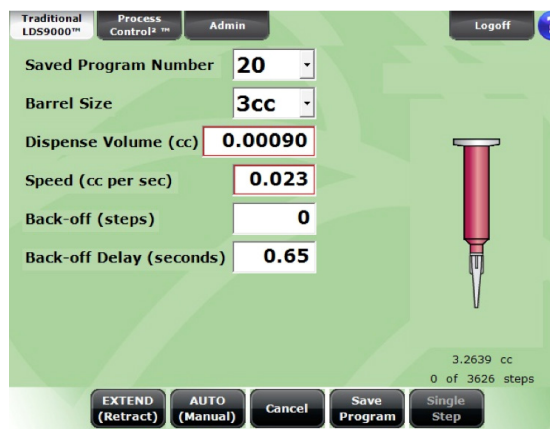
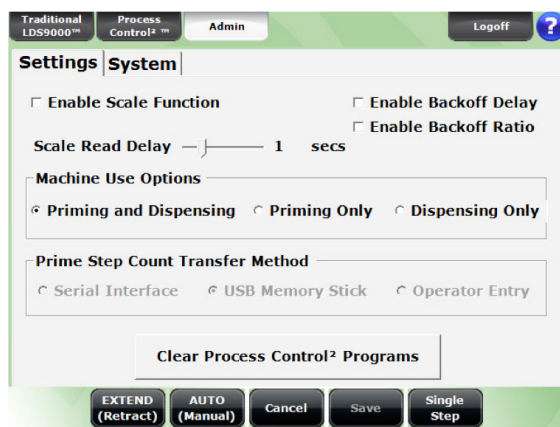
How to Activate: Set your program, activate back off ratio, save your program and dispense.



LDS9000

Back-off Delay Mode

Use Back-off Delay Mode with a RTV Silicone.



**Final dispense repeatability is fluid and application dependent.*